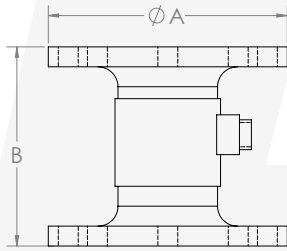
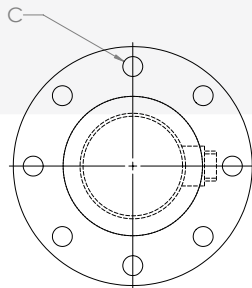




**High Capacity Rotating Torque Sensor**



A	Overall Diameter	Customer Specified
B	Overall Height	Customer Specified
C	Mounting Pattern	Customer Specified, Keyway or Flange



**STANDARD PERFORMANCE SPECIFICATIONS**

MODEL / TYPE	High Capacity Rotating
CAPACITY (FS)	120,000 to 360,000 in-lbs
OUTPUT	2.0 mV/V (Nominal), Others Available
BRIDGE RESISTANCE	350 Ohms (Nominal), Others Available
MAXIMUM ERROR (ACCURACY)	0.05 to 0.25% of FS
ZERO BALANCE	1% of FS
STANDARD OPERATING TEMP RANGE	-20 to +400°F (-29 to +120°C)
OPTIONAL OPERATING TEMP RANGE	-452 TO 450°F (-269 to 230 °C)
SAFE OVERLOAD	150% of FS
ENVIRONMENTAL PROTECTION	Lab Environment to Water Splash Resistant
MATERIAL OPTIONS	Stainless Steel, Aluminum, Titanium

**FEATURES**

- NIST traceable calibration
- CW and CCW Operation
- Capacity 120,000 to 360,000 in-lbs
- 150% Overload capacity
- Heat treated stainless steel construction
- Slip Ring or Wireless

**OPTIONS**

- Higher output mV/V
- High level output (0-5 VDC, 0-10 VDC, 4-20mA)
- Harsh environment capabilities
- Custom mounting configurations
- Material options available: Aluminum, Titanium, Beryllium Copper
- Water Splash Resistant
- Cryogenic and high temperature
- Custom cable lengths and connectors available

CONTACT US FOR YOUR CUSTOM APPLICATIONS

**508-992-0872**

**800-849-4016**

[info@sensing-systems.com](mailto:info@sensing-systems.com)

[www.sensing-systems.com](http://www.sensing-systems.com)

**MAILING ADDRESS:**

P.O. BOX 50180 NEW BEDFORD, MA 02745

**SHIPPING ADDRESS:**

263 BROOK STREET, NEW BEDFORD, MA 02745

®THIS DRAWING / SPECS ARE NOT TO BE COPIED OR DISTRIBUTED IN WHOLE OR IN PART BY ANY FIRM OR INDIVIDUAL WITHOUT WRITTEN PERMISSION FROM SENSING SYSTEMS