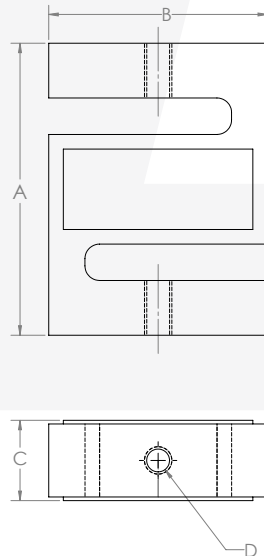
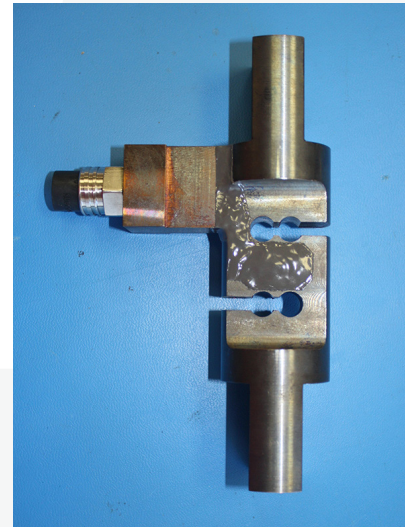




Underwater S Beam Load Cell



| | | |
|---|-------------------|--|
| A | Overall Length | Customer Specified |
| B | Overall Width | Customer Specified, Capacity Dependent |
| C | Overall Thickness | Customer Specified, Capacity Dependent |
| D | Mounting Hole | Customer Specified |



STANDARD PERFORMANCE SPECIFICATIONS

| | |
|-------------------------------|--------------------------------------|
| MODEL / TYPE | Underwater S Beam |
| CAPACITY (FS) | 50 to 3,000 lbs |
| OUTPUT | 2.0 mV/V (Nominal), Others Available |
| BRIDGE RESISTANCE | 350 Ohms (Nominal), Others Available |
| MAXIMUM ERROR (ACCURACY) | 0.05 to 0.25% of FS |
| ZERO BALANCE | 1% of FS |
| STANDARD OPERATING TEMP RANGE | -20 to +400°F (-29 to +120°C) |
| OPTIONAL OPERATING TEMP RANGE | -452 TO 450°F (-269 to 230 °C) |
| SAFE OVERLOAD | 150% of FS |
| ENVIRONMENTAL PROTECTION | Submersible/Waterproof |
| MATERIAL OPTIONS | Stainless Steel, Aluminum, Titanium |

FEATURES

- NIST traceable calibration
- Operation in tension and compression
- Capacity 50 to 3,000 lbs.
- 150% Overload capacity
- Heat treated stainless steel construction

OPTIONS

- Higher output mV/V
- High level output (0-5 VDC, 0-10 VDC, 4-20mA)
- Harsh environment capabilities
- Custom mounting configurations
- Material options available: Aluminum, Titanium, Beryllium Copper
- Fully submersible/waterproof
- Cryogenic and high temperature
- Custom cable lengths and connectors available

CONTACT US FOR YOUR CUSTOM APPLICATIONS

508-992-0872

800-849-4016

info@sensing-systems.com

MAILING ADDRESS:

P.O. BOX 50180 NEW BEDFORD, MA 02745

SHIPPING ADDRESS:

263 BROOK STREET, NEW BEDFORD, MA 02745

©THIS DRAWING / SPECS ARE NOT TO BE COPIED OR DISTRIBUTED IN WHOLE OR IN PART BY ANY FIRM OR INDIVIDUAL WITHOUT WRITTEN PERMISSION FROM SENSING SYSTEMS